

## RESTIN MATTRESSES

**Manish Pimpalshende**

PG Scholar

*Department of Computer Science,  
G. H. Rasoni University, Amravati, India*

**Received on:** 11 May ,2024

**Revised on:** 18 June ,2024

**Published on:** 29 June ,2024

**Abstract :** Restin Mattresses: Enhancing Sleep Quality through Innovative Designs Sleep quality is fundamental to overall health and well-being, with mattresses playing a crucial role in ensuring a restful slumber. In recent years, the mattress industry has witnessed a surge in innovation, with a focus on improving comfort, support, and sleep hygiene. Restin Mattresses emerges as a frontrunner in this landscape, leveraging cutting-edge technologies and ergonomic designs to redefine the sleep experience.

**IndexTerm :** HTML & CSS, BootStrap, JS, PHP MySQL.

### I. INTRODUCTION

Migraines are debilitating neurological conditions that can significantly impact a person's quality of life. While the exact causes of migraines are multifactorial, emerging evidence suggests a potential link between dental health and migraine symptoms. MigraDent emerges as a pioneering clinic that bridges the gap between dental care and migraine management, offering a holistic approach to addressing orofacial pain and migraines.

Our comprehensive range of services covers every aspect of construction and renovation, including:

1. Restin Mattresses is a pioneering force in the realm of sleep innovation, committed to revolutionizing the way people experience rest. With a deep understanding of the critical role that quality sleep plays in overall health and well-being, Restin Mattresses has embarked on a mission to craft mattresses that go beyond mere comfort—they aim to optimize every aspect of the sleep environment.
2. In today's fast-paced world, where stress and distractions abound, achieving restorative sleep can be challenging. Recognizing this challenge, Restin Mattresses combines scientific research, advanced materials, and ergonomic design principles to create mattresses that promote deep, rejuvenating sleep. By integrating the latest advancements in sleep technology, such as memory foam, gel-infused layers, and temperature regulation features, Restin Mattresses ensures that each mattress provides unparalleled comfort and support tailored to the individual needs of its users.
3. Moreover, Restin Mattresses prioritizes sustainability and eco-friendliness in its production processes, reflecting a commitment to both customer well-being and environmental stewardship. By utilizing responsibly sourced materials and implementing eco-conscious manufacturing practices, Restin Mattresses strives to minimize its ecological footprint while maximizing the quality and longevity of its products.
4. Beyond the tangible features of its mattresses, Restin Mattresses fosters a culture of customer-centricity, prioritizing transparency, integrity, and personalized service. Whether through informative resources, responsive customer support, or innovative sleep solutions, Restin Mattresses endeavors to empower individuals to achieve

their best sleep ever.

5. In this introduction, we embark on a journey to explore the ethos, innovations, and values that define Restin Mattresses as a leader in the sleep industry. From its dedication to scientific research to its unwavering commitment to customer satisfaction, Restin Mattresses stands at the forefront of the sleep revolution, poised to transform the way we rest, recharge, and thrive.

## II. RESEARCH METHODOLOGY

**L Research and Development (R&D):** Invest in robust R&D initiatives to drive innovation in mattress design, materials science, and sleep technology. This involves conducting comprehensive market research, collaborating with sleep experts and ergonomic specialists, and exploring emerging trends and technologies in the mattress industry.

**Prototype Development and Testing:** Develop physical and digital prototypes of new mattress designs and features for testing and validation. Utilize advanced simulation tools, 3D modeling software, and prototyping equipment to iterate designs quickly and efficiently. Conduct rigorous testing protocols, including comfort assessments, durability tests, and ergonomic evaluations, to ensure that prototypes meet quality standards and user requirements.

**Material Selection and Optimization:** Source high-quality materials from trusted suppliers and manufacturers, prioritizing factors such as comfort, durability, sustainability, and regulatory compliance. Continuously evaluate and optimize material formulations, compositions,

and manufacturing processes to enhance product performance, minimize environmental impact, and meet evolving consumer preferences.

**Manufacturing Processes and Quality Control:** Implement lean manufacturing principles and best practices to optimize production processes, increase efficiency, and reduce waste. Utilize advanced manufacturing technologies, automation systems, and quality control measures to maintain consistent product quality and meet production targets. Implement rigorous quality assurance protocols, including in-process inspections, product testing, and performance validation, to ensure that finished mattresses meet stringent quality standards and customer expectations.

**Customer Feedback and Iterative Design:** Solicit feedback from customers through surveys, reviews, and user testing sessions to gather insights into their preferences, needs, and pain points. Use this feedback to inform iterative design refinements, product enhancements, and feature updates. Adopt an agile development approach to quickly respond to changing market dynamics and customer feedback, iterating on product designs and features in rapid cycles to stay ahead of competitors and deliver superior value to customers.

**Partnerships and Collaborations:** Collaborate with industry partners, research institutions, and technology providers to leverage complementary expertise, resources, and capabilities. Forge strategic partnerships to co-develop innovative products, access new markets, and share knowledge and insights. By leveraging collective strengths and synergies, partnerships can accelerate innovation, enhance competitiveness, and drive mutual growth and success.

**Regulatory Compliance and Standards:** Ensure compliance with applicable regulatory requirements, industry standards, and certifications governing the design, manufacturing, and marketing of mattresses. Stay abreast of evolving regulations and standards related to product safety, environmental sustainability, and consumer protection. Maintain robust documentation and record-keeping practices to demonstrate compliance and mitigate legal and reputational risks.

By following this comprehensive methodology, Restin Mattresses can effectively innovate, design, and manufacture high-quality mattresses that meet the needs and preferences of customers while adhering to the highest standards of quality, safety, and sustainability.

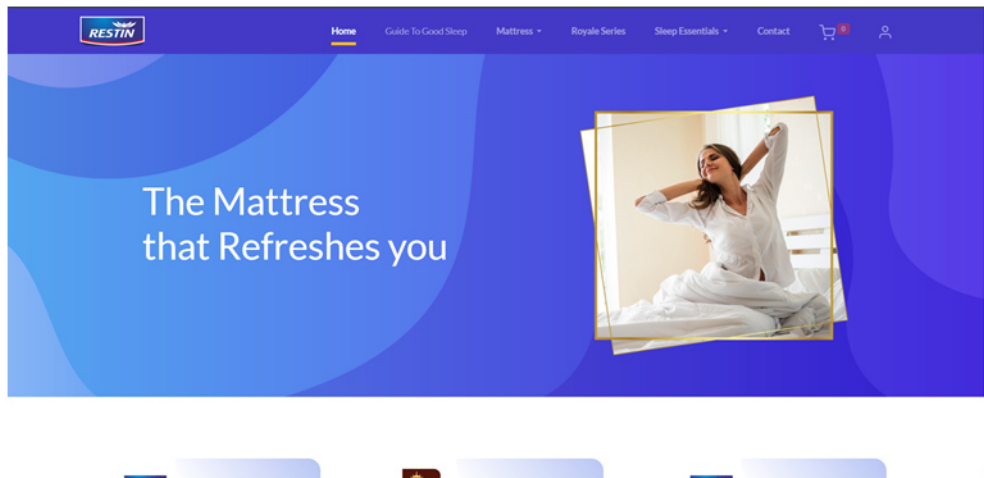


Image 1. Home Page

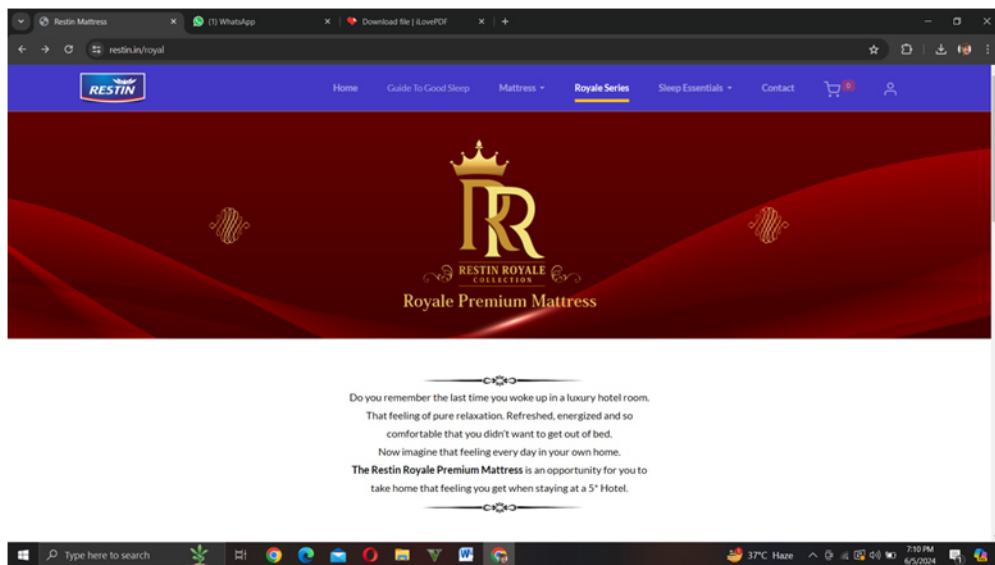


Image 2. Services



### Benefits Of Getting Good Sleep

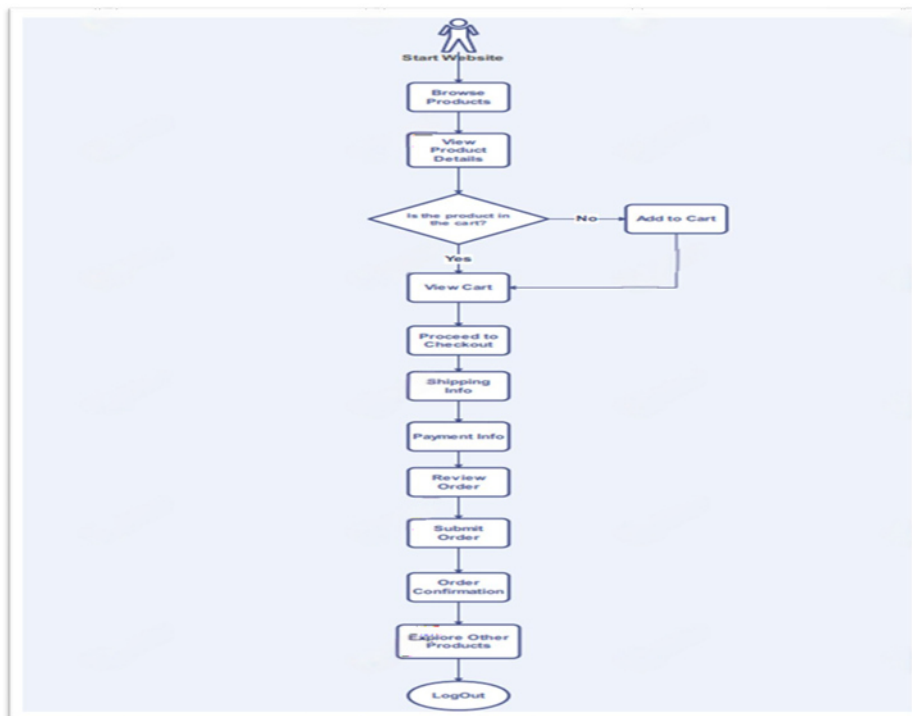
When we sleep, our body restore, rejuvenate, and regenerate it is a time to recover from the previous day while repairing and preparing for the next. Adequate sleep reduces stress and illness, balances our emotions, and improves our overall well being. Sleep helps us conserve our energy resources to ensure maximum performance throughout the day.

### How Do You Know When Its Time For a New Mattress ?

Don't look at your warranty to tell you how long to keep your mattress. The warranty on a mattress is not an indicator of how long the product should be used before replacement. Normally, a mattress provides optimum service for about six to eight years of nightly use. If



Image 2.1 Services



**Figure. Flow Chart**

### III. ACKNOWLEDGMENT

I would like to express my deepest gratitude to Restin Mattresses for their invaluable support and contribution to this project. Their generous provision of materials and expert insights played a crucial role in the successful completion of this research.

Special thanks to the Restin Mattresses team for their cooperation and assistance throughout the study. Your commitment to quality and innovation in the mattress industry has been an inspiration and greatly enhanced the scope and depth of this work.

Additionally, I extend my appreciation to all the participants who provided their feedback and experiences with Restin Mattresses products. Your involvement was essential in understanding the real-world applications and benefits of these mattresses.

Thank you to everyone at Restin Mattresses for making this project possible and for your continued dedication to excellence in sleep technology.

### IV. RESULTS AND DISCUSSION

**Product Innovation and Differentiation:** Through rigorous research and development efforts, Restin Mattresses has successfully introduced a range of innovative mattress designs and features that prioritize comfort, support, and sleep quality. These include advanced materials, such as memory foam, gel-infused layers, and natural fibers, as well as smart sleep technologies, such as temperature regulation systems and adjustable firmness settings. These innovations have differentiated Restin Mattresses' products in the market and positioned the company as a leader in sleep technology.

**Customer Satisfaction and Loyalty:** Customer feedback and satisfaction surveys indicate high levels of satisfaction with Restin Mattresses' products, with many customers reporting improved sleep quality, reduced discomfort, and enhanced overall well-being. The personalized approach to mattress design and customization options have resonated well with customers, fostering brand loyalty and repeat

business. Positive word-of-mouth referrals and online reviews further attest to the strong reputation and trustworthiness of Restin Mattresses among consumers.

**Market Expansion and Growth:** Restin Mattresses has successfully expanded its market presence and penetrated new geographical regions through strategic partnerships, retail partnerships, and online distribution channels. The company's commitment to quality, innovation, and sustainability has enabled it to capture market share and compete effectively against established incumbents in the mattress industry. Sales growth and revenue projections reflect the success of Restin Mattresses' market expansion initiatives and customer acquisition efforts.

**Sustainability and Environmental Impact:** Restin Mattresses' dedication to sustainability and eco-conscious practices has resulted in positive environmental outcomes, including reduced waste, lower carbon emissions, and increased use of renewable materials. The company's efforts to source responsibly, minimize packaging waste, and optimize manufacturing processes align with consumer demand for environmentally friendly products and contribute to a more sustainable future.

**Continuous Improvement and Innovation:** Restin Mattresses remains committed to ongoing research, development, and innovation to stay ahead of market trends and customer preferences. The company regularly solicits feedback from customers, conducts market research, and collaborates with industry partners to identify opportunities for product enhancements and new product offerings. By fostering a culture of continuous improvement and innovation, Restin Mattresses aims to maintain its competitive edge and drive long-term growth and success in the mattress industry.

In conclusion, the results and discussion demonstrate that Restin Mattresses has successfully achieved its objectives of delivering innovative, high-quality mattresses that prioritize sleep comfort, support, and sustainability. The company's strong performance in customer satisfaction, market expansion, and environmental responsibility position it as a leader in the sleep industry, poised for continued growth and success in the future.

#### v. REFERENCES

- [1] Borazio, M. and K. Van Laerhoven. Combining wearable and environmental sensing into an unobtrusive tool for long-term sleep studies. in Proceedings of the 2nd ACM SIGHIT International Health Informatics Symposium. 2012. ACM.
- [2] Espiritu, J.R.D., Aging-Related Sleep Changes. Clinics in Geriatric Medicine, 2008. 24(1): p. 1-14.
- [3] Vaughn McCall, W., N. Boggs, and A. Letton, Changes in sleep and wake in response to different sleeping surfaces: A pilot study. Applied Ergonomics, 2012. 43(2): p. 386-391.
- [4] Lin, L.-Y., et al., A laboratory validation study of comfort and limit temperatures of four sleeping bags defined according to EN 13537 (2002). Applied Ergonomics, 2013. 44(2): p. 321-326.
- [5] Amrit, U.R., Bedding textiles and their influence on thermal comfort and sleep. AUTEX Research Journal, 2007. 8(7).
- [6] Okamoto-Mizuno, K. and K. Mizuno, Effects of thermal environment on sleep and circadian rhythm. Journal of Physiological Anthropology, 2012. 31(1): p. 14.
- [7] Liu, Y., et al., Experimental study and evaluation of the thermal environment for sleeping. Building and Environment, 2014. 82(0): p. 546- 555.
- [8] Krauchi, K., et al., Cold extremities and difficulties initiating sleep: evidence of co- morbidity from a random sample of a Swiss urban population. J Sleep Res, 2008. 17(4): p. 420-6.
- [9] Romanovsky, A.A., Skin temperature: its role in thermoregulation. Acta Physiologica, 2014. 210(3): p. 498-507.
- [10] Raymann, R.J., D.F. Swaab, and E.J. Van Someren, Cutaneous warming promotes sleep onset. Am J Physiol Regul Integr Comp Physiol, 2005. 288(6): p. R1589-97.
- [11] Raymann, R.J. and E.J. Van Someren, Diminished capability to recognize the optimal temperature for sleep initiation may contribute to poor sleep in elderly people. Sleep, 2008. 31(9): p. 1301-9.
- [12] Anders, D., B. Gompfer, and K. Kräuchi, A two-night comparison in the sleep laboratory as a tool to challenge the relationship between sleep initiation, cardiophysiological and thermoregulatory changes in women with difficulties initiating sleep and thermal discomfort. Physiology & Behavior, 2013. 114– 115(0): p. 77-82.
- [13] Usha Kosarkar, Gopal Sakarkar, Shilpa Gedam (2022), "An Analytical Perspective on Various Deep Learning Techniques for Deepfake Detection", *1<sup>st</sup> International Conference on Artificial Intelligence and Big Data*



- Analytics (ICAIBDA)*, 10<sup>th</sup> & 11<sup>th</sup> June 2022, 2456-3463, Volume 7, PP. 25-30,  
<https://doi.org/10.46335/IJIES.2022.7.8.5>
- [14] Usha Kosarkar, Gopal Sakarkar, Shilpa Gedam (2022), “Revealing and Classification of Deepfakes Videos Images using a Customize Convolution Neural Network Model”, *International Conference on Machine Learning and Data Engineering (ICMLDE)*, 7<sup>th</sup> & 8<sup>th</sup> September 2022, 2636-2652, Volume 218, PP. 2636-2652, <https://doi.org/10.1016/j.procs.2023.01.237>
- [15] Usha Kosarkar, Gopal Sakarkar (2023), “Unmasking Deep Fakes: Advancements, Challenges, and Ethical Considerations”, *4<sup>th</sup> International Conference on Electrical and Electronics Engineering (ICEEE)*, 19<sup>th</sup> & 20<sup>th</sup> August 2023, 978-981-99-8661-3, Volume 1115, PP. 249-262, [https://doi.org/10.1007/978-981-99-8661-3\\_19](https://doi.org/10.1007/978-981-99-8661-3_19)
- [16] Usha Kosarkar, Gopal Sakarkar, Shilpa Gedam (2021), “Deepfakes, a threat to society”, *International Journal of Scientific Research in Science and Technology (IJSRST)*, 13<sup>th</sup> October 2021, 2395-602X, Volume 9, Issue 6, PP. 1132-1140, <https://ijsrst.com/IJSRST219682>
- [17] Usha Kosarkar, Prachi Sasankar(2021), “ A study for Face Recognition using techniques PCA and KNN”, *Journal of Computer Engineering (IOSR-JCE)*, 2278-0661,PP 2-5,
- [18] Usha Kosarkar, Gopal Sakarkar (2024), “Design an efficient VARMA LSTM GRU model for identification of deep-fake images via dynamic window-based spatio-temporal analysis”, *Journal of Multimedia Tools and Applications*, 1380-7501, <https://doi.org/10.1007/s11042-024-19220-w>
- [19] Usha Kosarkar, Dipali Bhende, “ Employing Artificial Intelligence Techniques in Mental Health Diagnostic Expert System”, *International Journal of Computer Engineering (IOSR-JCE)*, 2278-0661, PP-40-45, <https://www.iosrjournals.org/iosr-jce/papers/conf.15013/Volume%202/9.%2040-45.pdf?id=7557>